



Cover: W60/22 silver grey



## valentino

16540

### Modern and functional.

The elegant seat depth adjustment is a standard with **valentino** 16540. The stylish seams can stock out even more by a special cross stitched seam. The elegant metal leg can be ordered in different metal shades.

  
W.SCHILLIG

## SOFAS



**NL75**  
large sofa w/ seat  
depth adj.

222/100/83/43



**NL85**  
large sofa w/ seat  
depth adj.

242/100/83/43

## ELEMENTS WITH ARMPART RIGHT



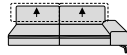
**ML75R**  
element with arm-  
part w/ seat depth adj.

111/100/83/43



**NL75R**  
large sofa with arm-  
part w/ seat depth adj.

186/100/83/43



**NL85R**  
large sofa with arm-  
part w/ seat depth adj.

206/100/83/43

## END ELEMENTS RIGHT



**KL75R**  
one arm chaise w/  
seat depth adj.

113/178/83/43

## INTERMEDIATE ELEMENTS



**NL75K**  
sofa without arm-  
part w/ seat depth adj.

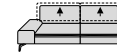
150/100/83/43

## ELEMENTS WITH ARMPART LEFT



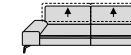
**ML75L**  
element with arm-  
part w/ seat depth adj.

111/100/83/43



**NL75L**  
large sofa with arm-  
part w/ seat depth adj.

186/100/83/43



**NL85L**  
large sofa with arm-  
part w/ seat depth adj.

206/100/83/43

## END ELEMENTS LEFT



**KL75L**  
one arm chaise w/  
seat depth adj.

113/178/83/43

### CORNER ELEMENTS



**EL**  
pointed corner for articles with seat depth adjustment

112/112/83/43

### PILLOWS



**UN75.**  
lumbar pillow for 75 cm seat

68/7/35/0



**UN85.**  
lumbar pillow for 85 cm seat

78/7/35/0



**U**  
armchair pillow

58/58/6/0



**UR75.**  
back cushion with roll

72/8/20/0

### OTTOMANS & ACCESSORIES



**G75**  
ottoman

75/61/43/0



**G150**  
extra large ottoman

150/61/43/0



**U92**  
plug-in headrest

60/13/24/0

**Z**  
base leg



### Flexible seat depth

The back of some units can be moved backwards to increase the seat depth, see type plan. The total depth changes.

### Metal colours for legs

Some legs can be ordered in high-gloss chrome-, silver, bronze- or black-coloured. Please indicate when ordering.

### Seam design

The model is made in fabric with felled stitch. In leather with decorative cross stitch. A contrasting thread in leather and some fabric colours is available.

### Flexible plug-in headrest

The U 92 headrest with joint can be inserted between the back of the carcase and the back cushion (except for article EL - here only in the middle back).

### Absolute eye-catcher

The beautiful, cubic armrests of the model provide an interesting look. The armrest pillow can be placed here.

## ORDER INFORMATION

### Back sides of sofas:

All pieces are genuinely upholstered at the back.

### Connecting sides:

For a surcharge, the connecting sides can be supplied in the original cover instead of stretch fabric.

### Positioning diagram:

Please send us a positioning diagram, depending on the different variations available. The connecting sides got marked in red for some elements in the type guide.

### Base leg Z:

If elements and sofas without or with 1 armrest are to be placed directly against elements or sofas without or with 1 armrest, a base leg Z is required and must be ordered.

### Seam appearance:

Decorative, felled or double seams may appear different in fabric and leather versions. For manufacturing reasons, seams may be left out of the fabric version or replaced with simple seams.

### Contrasting thread:

This model is available in leather and some fabric colours with contrasting colour thread at no

extra charge. You will find the specified colours in our fabric/leather trolley. Please state the no., otherwise tone-in-tone will be delivered.

**All of the dimensions given are approximate dimensions in cm in width/depth/height/seat height. We reserve the right to make changes.**

Seat depth: approx. **61 cm**

Seat depth with function: ca. **81 cm**

Armrest width: ca. **36 cm**

Armrest height: approx. **52 cm**

### Measurements of the corner combinations:

With this model the seat of the one arm chaises

the seat rises approx. 2 to 3 cm into the connecting side. Therefore other total measures occur than by pure addition of the article measurements. Please note.

### Especially casual upholstery:

The upholstery is especially casually processed to create a certain appearance with a super soft surface. The covers may already show a pronounced wavy appearance on delivery, which is intentional due to the design and construction and may become even more pronounced with use. This is not a quality defect, but a model-related characteristic.

### Note on upholstery construction:

Ticking cushions have been used in the seat and back. This can lead to the marking of individual chambers and is a typical feature of the product.

### Digital fabric/leather and colour samples:

The visual appearance of the covers and colour samples may vary, samples in accordance - colour and structure deviations possible.

W.SCHILLIG

## LEGS



metal leg **different metal colours**

### F C3

#### Metal colours:

All legs are available in different metal colours. Please indicate when ordering.

#### Powder-coated:

The colours M21 silver, M56 bronze and M99 black are powder-coated.

#### Legs and floor protection:

With slim furniture legs with a small gliding surface, there is increased pressure on the

floor. We recommend fitting glides or an underlay to protect against scratches and pressure marks on sensitive floors.

## AVAILABLE METAL COLOURS



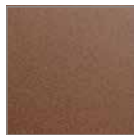
high-gloss  
chrome

M20



silver

M21



bronze

M56



black

M99

## valentino

16540

### ORDER CHECKLIST

- Structure and cover
- Metal colour for legs
- Ottomans & Accessories
- Contrasting thread
- Flexible plug-in headrest
- Positioning diagram
- Pillows



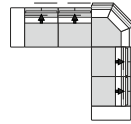
W.SCHILLIG

LIVING EXAMPLES



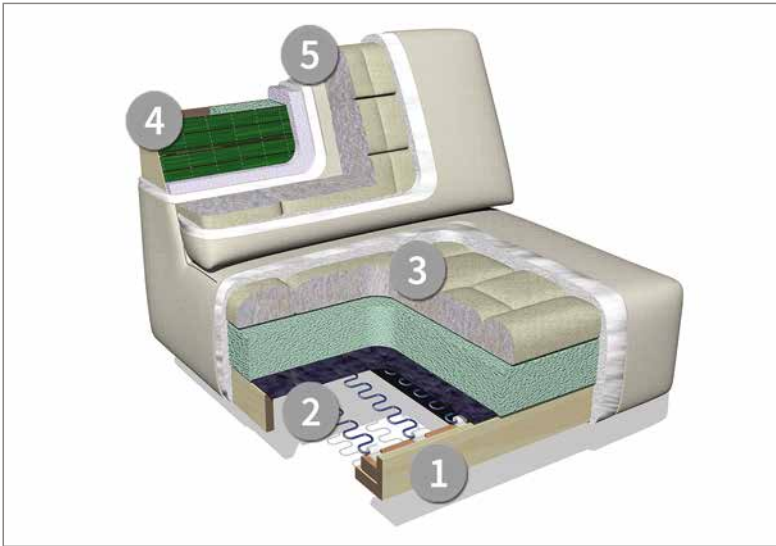
Cover: Z73/43 cream white

corner combination  
NL 85L laf - EL - NL 75R raf



318x298

## UPHOLSTERED FURNITURE FRAME STRUCTURE



The design of the cross section shown here does not correspond to the model on this page of the catalogue.

- 1. Frame** – beech wood structure; back: metal construction
- 2. Seat suspension** with permanently elastic wave springs
- 3. Seat upholstery structure** of ergo-PUR-foam and a high quality mix of polyester fibres and foam rods
- 4. Back suspension** with upholstery strap and ergoPUR-foam
- 5. Back upholstery structure** with high quality mix of polyester fibres and foam rods, filled in boxes

[www.schillig.com](http://www.schillig.com)

## Upholstered furniture from passion.

For almost 75 years, this passion has led to the creation of high-quality and special pieces of furniture and designer furniture - sofas that combine elegant and contemporary design with first-class comfort. We stand for craftsmanship, trend-setting ideas, appealing design and know-how from Germany. The result is upholstered furniture with guaranteed first-class comfort and attention to detail. When selecting the materials used, we pay attention to sustainability and the conservation of resources.

- Traditional craftsmanship down to the last detail
- High-quality, environmentally friendly materials
- Careful & precise workmanship
- Cooperation with renowned furniture designers
- Production according to DIN & RAL quality guidelines of the Deutsche Gütegemeinschaft Möbel e.V.
- Regularly tested product quality „Made in Germany“
- Development at the Upper Franconian location in Ebersdorf near Coburg
- Carefully selected fabric and leather cover collections in many colours for a wide range of requirements.



quality  
Made in Germany

**W.SCHILLIG** GmbH & Co. KG  
Am Weinberg 20 - 22  
96237 Ebersdorf bei Coburg  
GERMANY  
Telephone: +49 9562 37-0  
Telefax: +49 9562 37-500  
E-Mail: [info@schillig.de](mailto:info@schillig.de)

  
**W.SCHILLIG**